

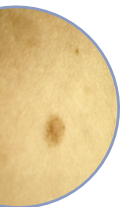
## IDENTIFYING CONDITIONS INTRO CHART

Actual results may vary depending on condition, lense and magnification used



### 1x-10x MAGNIFICATION

Show live video of the face, head, or body for overall skin appearance, texture, and features. Easily capture photos to display and discuss. Print pictures or save pictures as JPEG files to your client file. Used close up you can see skin texture and surface features such as wrinkles, blemishes, moles, tags, etc.



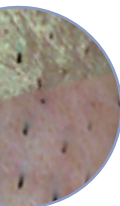
### 10x-20x MAGNIFICATION

For somewhat closer views than 1-10x lens range, lenses in 10x to 20x are best to further emphasize texture problems or skin irregularities or abnormalities such as moles, tags, acne, rosacea, or other forms of dermatitis. The sidelighting lens is best at showing skin texture. The polarizing lens is best to show pigmentation and dilated capillaries for a larger surface area than a 30x polarizing lens.



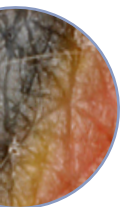
### 30x-50x MAGNIFICATION

Use the non-polarized lenses to view close up of the skin. See close-ups of skin to view clogged pores, surface texture, surface features such as wrinkles, moles, skin tags, and inflammations, rashes or other forms of dermatitis.



### 30x-50x MAGNIFICATION with POLARIZATION

Using the polarizing light feature you can see below skin the surface for pigmentation (hyperpigmentation), dilated capillaries, depth of pores, and various skin inflammations. Images will appear softer with less glare.



### 100x-200x MAGNIFICATION

The higher magnifications are used to views of specific skin features such as moles, clogged or open pores, and dilated capillaries.



### 400x-500x MAGNIFICATION

Use the 400x lens or 500x lens to examine clogged or infected pores, black heads, and check for evidence of mites, subdermal condition, and capillary blood flow.